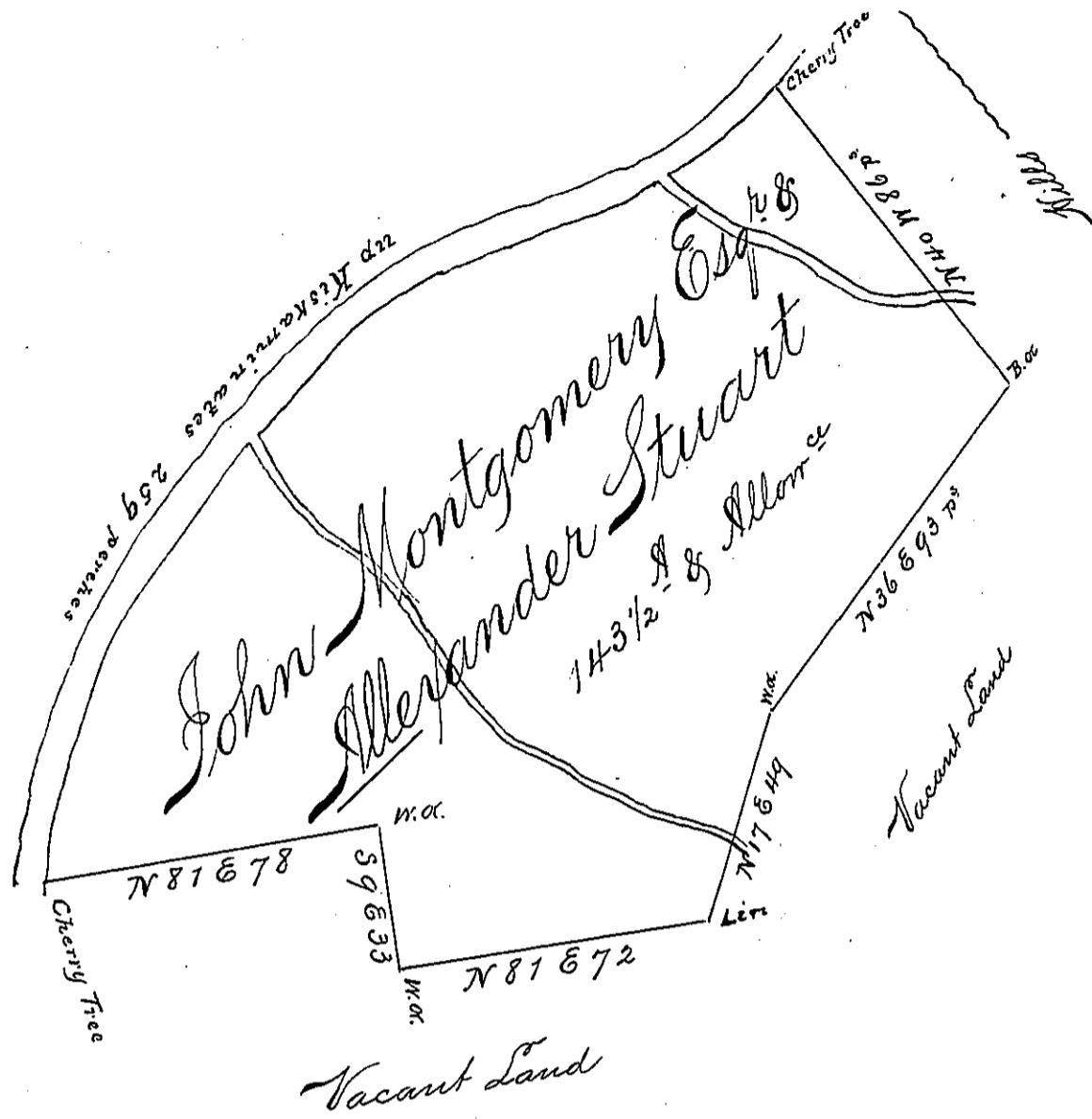


The several Courses &  
Distances on the Creek

|         |       |
|---------|-------|
| S 48 W  | 32 ps |
| W. S. W | 74    |
| S 41 W  | 55    |
| S W 2 S | 56    |
| S 10 W  | 42    |



Black Legs the North Side. Survey'd to John  
Montgomery Esq. & Alexander Stuart on the  
20<sup>th</sup> Day of March 1769 Containing One Hun-  
dred & fourty three Acres & a half & the Usual  
Allorance of Soil p. C. & C. situate on the North  
side of Kiskaminates Cumberland County  
By Application of the Ninth Day of Feb<sup>y</sup>  
1769 N<sup>o</sup> 14 p.

Joshua Elder D.S.

To Jas. Lukens Esq. S. Genl.

IN TESTIMONY that the above is a copy of the original remaining on file in the  
Department of Internal Affairs of Pennsylvania, made con-  
formably to an Act of Assembly approved the 16th day of  
February, 1833. I have hereunto set my Hand and caused  
the Seal of said Department to be affixed at Harrisburg, this

fourth day of February 1896.

James W. Latta  
Secretary of Internal Affairs.